

WALNUT GROVE

~ A TRADITIONAL NEIGHBORHOOD ~

LAWTON BUILDING

OFFICE / RETAIL

1450 William Street

www.walnutgrovetnd.com



W.G. REALTY COMPANY

Contact: **Matt Redd**, CCIM, SIOR

(337) 497-0825

mattredd@latterblum.com

This three story, office and retail building is positioned at the head of our Great Lawn and overlooks our Contraband Estuary and out into Contraband Bayou to the south. The north view looks out onto Contraband Alley, a pedestrian boutique shopping area, and the edge of Market Square.

TOTAL AREA: 22,800 sf

FLOORS: 3

FEATURES:

- Short walk from the commercial area and the neighborhoods of Walnut Grove
- Elevator Access
- Adjacent meeting/banquet room available for use
- Fiber optic cabling throughout
- Class A office building

SPACES:

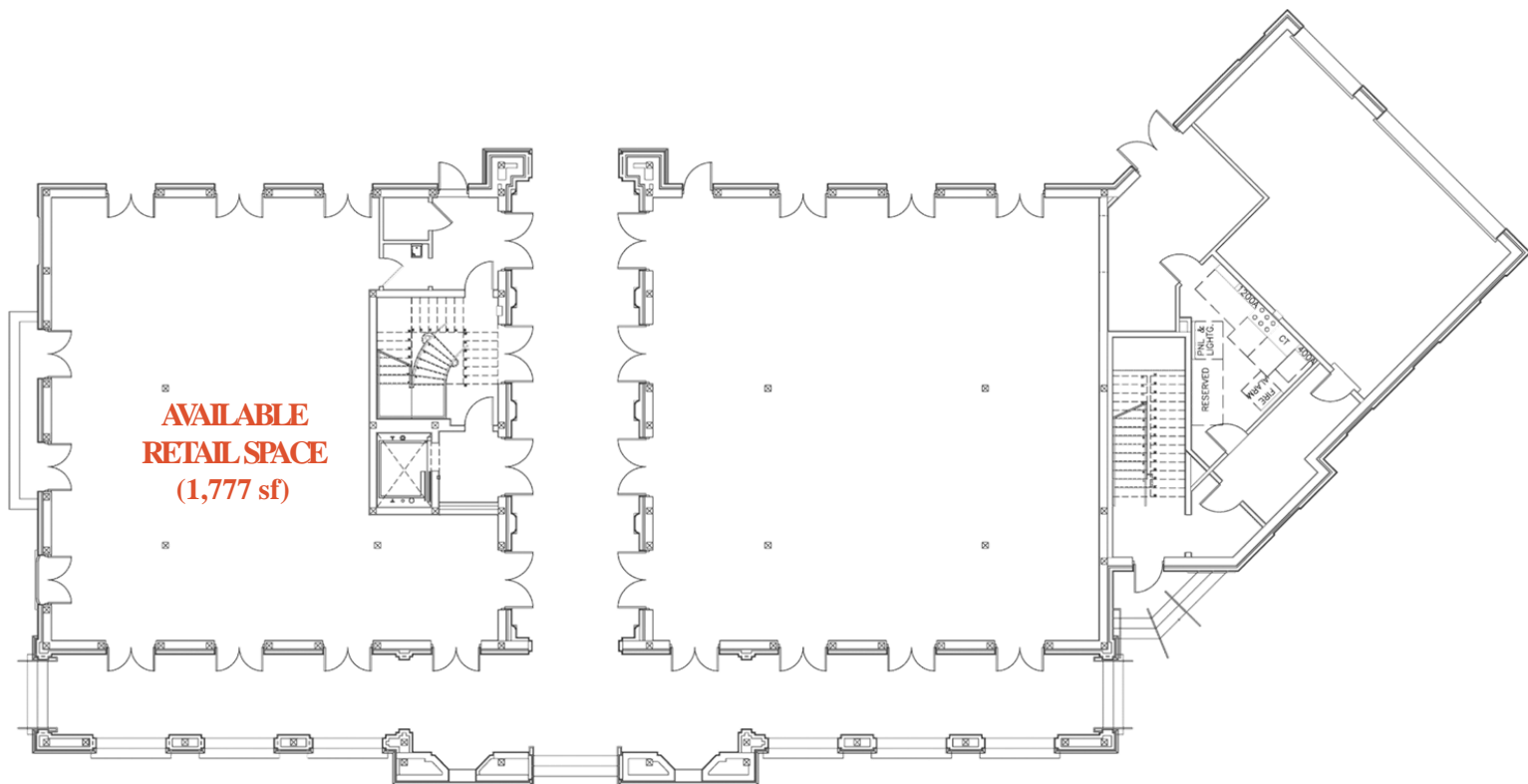
Floor 1 Available Retail Space (1,777 sf)

Floor 2 Jack Lawton Companies
Walnut Grove Development, LLC

Floor 3 Morgan Stanley

Updated 10/21/14; subject to change

COPYRIGHT: © 2012 by Walnut Grove Design Group.



WALNUT GROVE

~ A TRADITIONAL NEIGHBORHOOD ~

LAWTON BUILDING

OFFICE / RETAIL

1450 William Street

www.walnutgrovetnd.com



W.G. REALTY COMPANY

Contact: **Matt Redd**, CCIM, SIOR

(337) 497-0825

mattredd@latterblum.com

This three story, office and retail building is positioned at the head of our Great Lawn and overlooks our Contraband Estuary and out into Contraband Bayou to the south. The north view looks out onto Contraband Alley, a pedestrian boutique shopping area, and the edge of Market Square.

TOTAL AREA: 22,800 sf

FLOORS: 3

FEATURES:

- Short walk from the commercial area and the neighborhoods of Walnut Grove
- Elevator Access
- Adjacent meeting/banquet room available for use
- Fiber optic cabling throughout
- Class A office building

SPACES:

Floor 1 Available Retail Space (1,777 sf)

Floor 2 Jack Lawton Companies
Walnut Grove Development, LLC

Floor 3 Morgan Stanley

Updated 10/21/14; subject to change

COPYRIGHT: © 2012 by Walnut Grove Design Group.